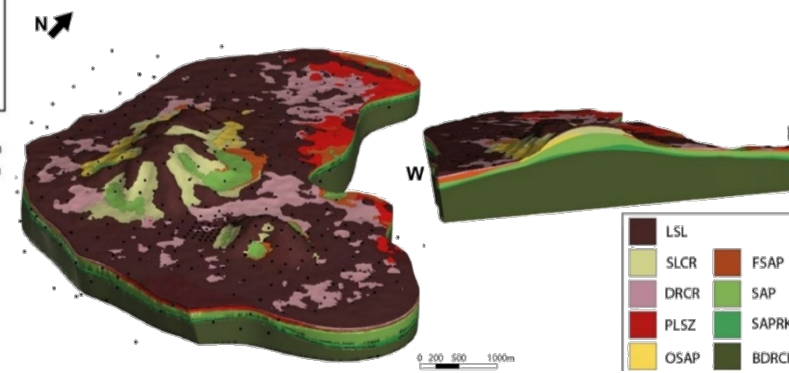
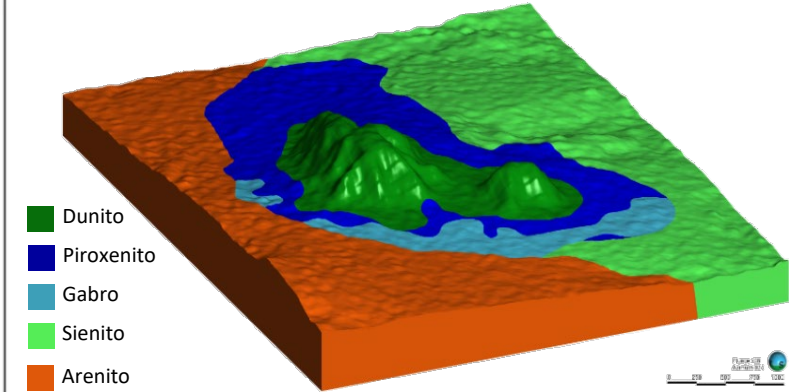
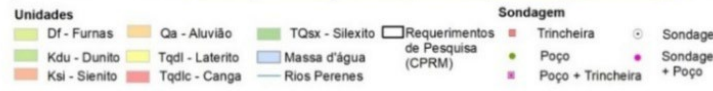
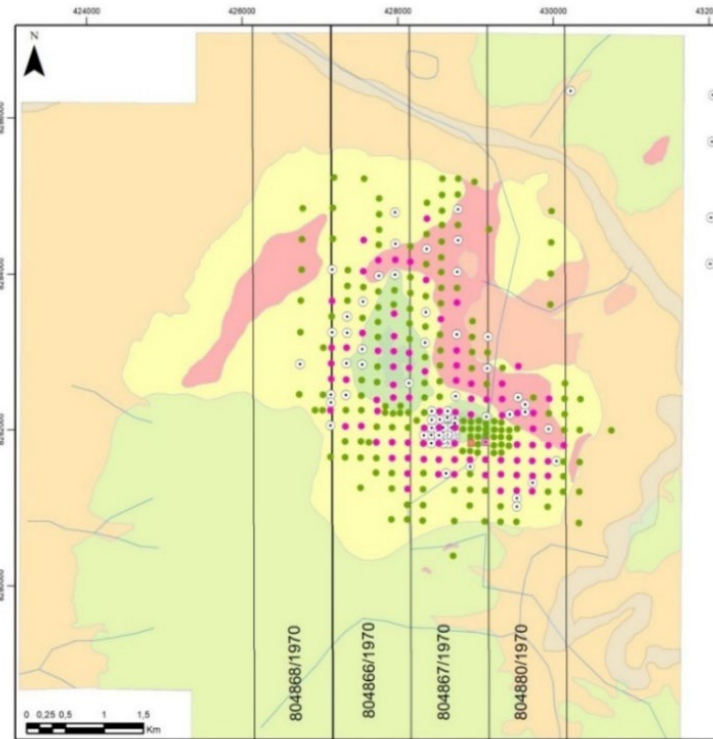


Projeto Morro do Engenho - GO

Níquel



Processo	Município	Área (ha)	RFP
804.866/70	Jussara	1.000	08/10/75
804.867/70	Jussara	1.000	08/10/75
804.868/70	Montes Claros de Goiás	1.000	08/10/75
804.880/70	Jussara	1.000	08/10/75

Tipo de Minério	Recursos	Ni (%)	Co (%)	Sc (%)	NiEq (%)
Óxido	30 Mt	1,04	0,05	42,49	1,15
Silicático	38 Mt	1,09	0,03	30,36	1,15
Recursos Totais	68 Mt	1,07	0,04	35,72	1,15

