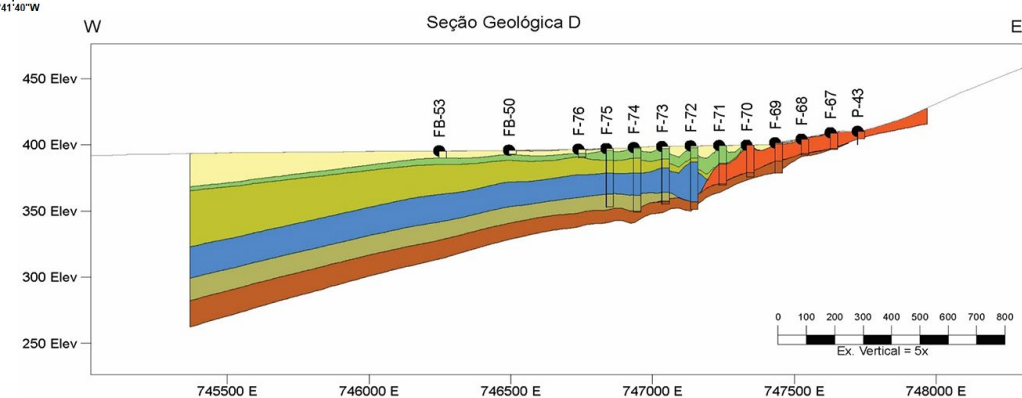
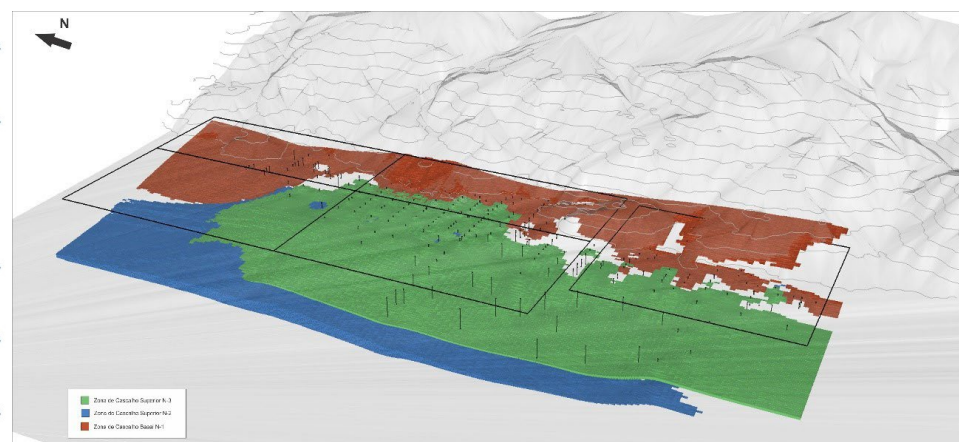
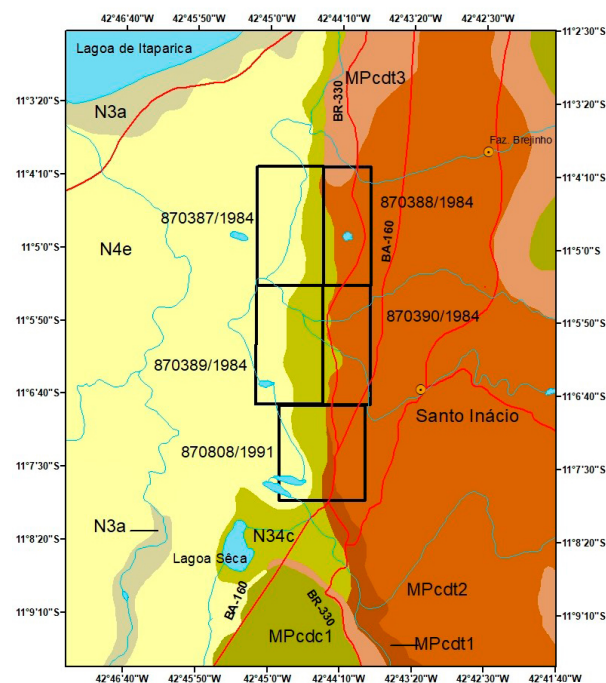
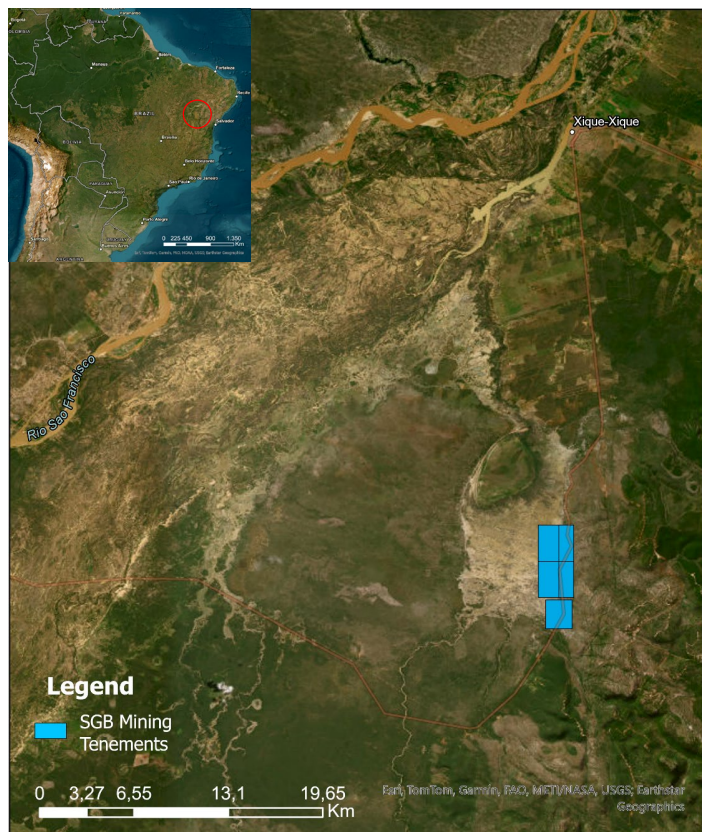


# Projeto Santo Inácio - BA Diamante



Processo	Município	Área (ha)	RFP
870387/1984	Gentio do Ouro	500	17/10/2001
870388/1984	Gentio do Ouro	500	17/10/2001
870389/1984	Gentio do Ouro	500	09/10/2001
870390/1984	Gentio do Ouro	500	19/09/2001
870808/1991	Gentio do Ouro	400	28/05/2003

- Grupo Chapada Diamantina (Formação Tombador, Mesoproterozoico)
- Hospedado em horizontes paleoplacéricos conglomeráticos e depósitos coluvioaluvionares

Processo	Área (ha)	Cascalho (t)	Teor (cpht)	Total (ct)
870387/1984	500	87.665.979	0,41	362.361
870388/1984	500	28.631.050	1,73	496.332
870389/1984	500	86.608.393	0,38	331.787
870390/1984	500	31.021.622	1,45	450.720
870808/1991	400	10.441.051	1,83	191.521
<b>Total</b>	<b>2.400</b>	<b>244.368.095</b>	<b>0,58</b>	<b>1.832.720</b>